



# Centurion SELECT

HORIZONTAL ALUMINUM SYSTEM



**SPS** **STEPHENS**  
PIPE & STEEL

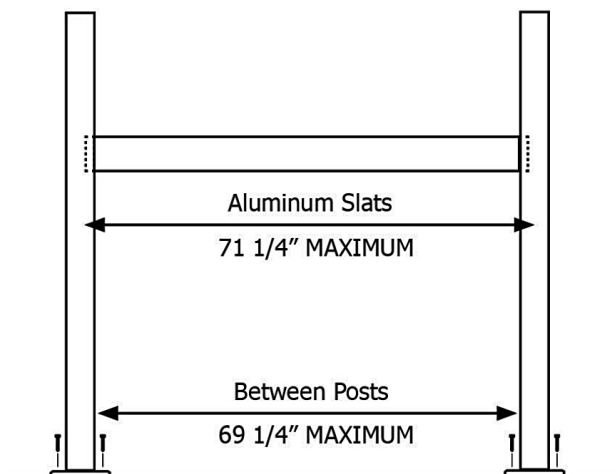
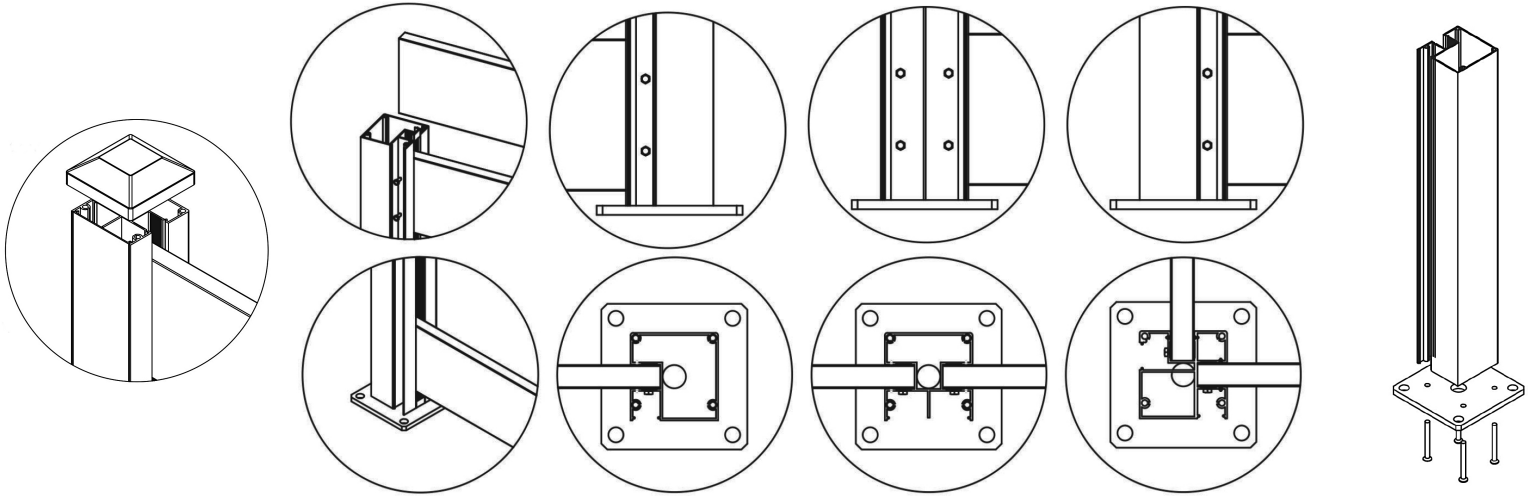
800-451-2612 – [SPSCenturion.com](http://SPSCenturion.com)



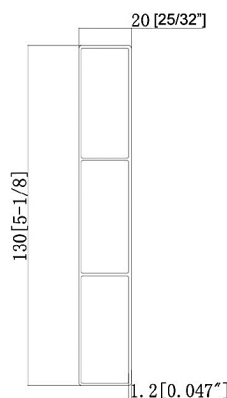
# Centurion Select

## Horizontal Aluminum Fence System

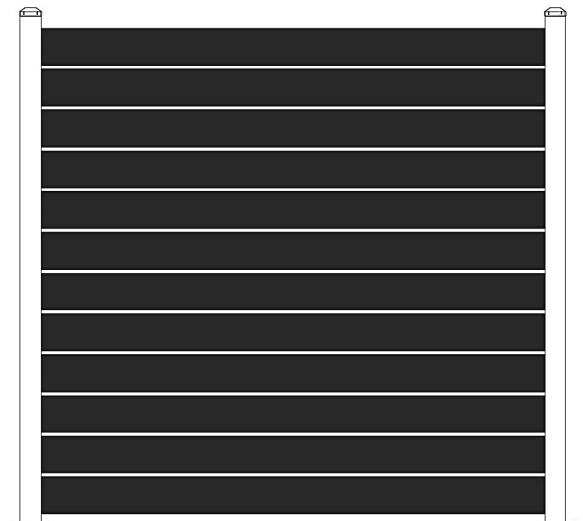
Centurion Select offers our unique take on horizontal board fencing. Our patented, all-aluminum fence is unlike any other. Three inch square aluminum posts are extruded in three unique shapes offering corner, end and line posts with a surface mount option. The slats can be installed for privacy and with the included spacers, allows a semi private installation. When finished, Centurion Select offers an elegant solution that compliments a wide range of building styles and outdoor living spaces. It's everything you have come to expect from Stephens Pipe, your "One Stop" Fencing Supplier.



**\*IMPORTANT : ANCHOR POSTS 2" CLOSER THAN THE LENGTH OF THE SLATS SO THAT SLATS INSERT INTO THE RAIL.**



Aluminum Slat



## CENTURION SELECT

SERIES	PANEL	GATE
SLAT LENGTH	71-1/4"	—
NUMBER OF SLATS	8 on 4 ft • 12 on 6 ft	—
AIR SPACE	0 or 1/2"	1/2"
RAILS	3/4" x 5-1/8"	3/4" x 5-1/8"
POSTS	3" x 3" 4' & 6' on Plated • 6' & 8' Ground	3" x 3" 4' & 6' on Plated • 6' & 8' Ground
POST SPACING	69-1/4"	—
PANEL/GATE SIZE	69-1/4" x 48" or 72"	4'x4', 4'x6', 6'x4' & 6'x6'

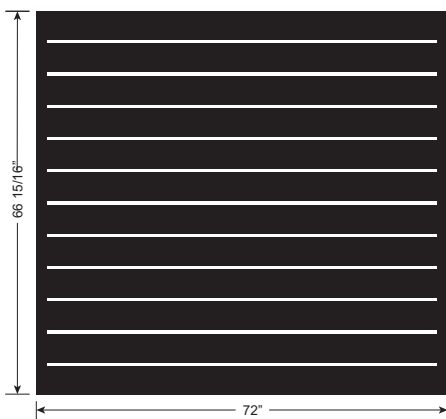
### 4 & 6 FT TALL FENCE SURFACE MOUNT INSTALLATION

POSTS	2" SPACER	1/2" SPACER	SLAT SCREWS 4 PER SLAT	POST CAP	THIN SNAP PLATE	WIDE SNAP PLATE	BASE PLATE & 4 SCREWS
4' END 48"	1	7	16	1	1	0	1
4' LINE 48"	2	14	32	1	0	1	1
4' CORNER 48"	2	14	32	1	0	1	1
6' END 72"	1	11	24	1	1	0	1
6' LINE 72"	2	22	48	1	0	1	1
6' CORNER 72"	2	22	48	1	2	0	1

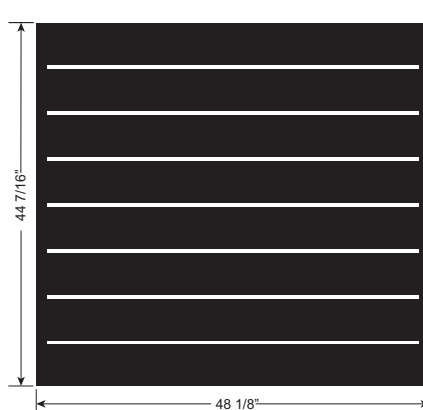
### 4 & 6 FT TALL FENCE IN-GROUND INSTALLATION

4' END 48"	1	7	16	1	1	0	0
4' LINE 48"	2	14	32	1	0	1	0
4' CORNER 48"	2	14	32	1	2	0	0
6' END 72"	1	11	24	1	1	0	0
6' LINE 72"	2	22	48	1	0	1	0
6' CORNER 72"	2	22	48	1	2	0	0

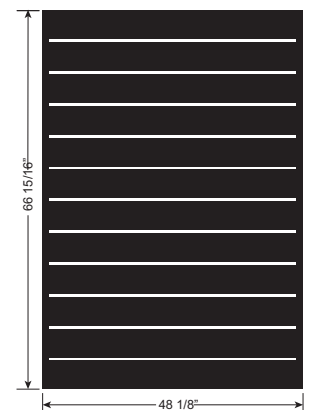
**GATE PANEL - 6'w X 6'h**  
(Actual size 72"w x 66-15/16"h)



**GATE PANEL - 4'w X 4'h**  
(Actual size 48-1/8"w x 44-7/16"h)



**GATE PANEL - 4'w X 6'h**  
(Actual size 48"w x 66-15/16"h)



# Centurion Select Hardware

We have made ordering Centurion Select very easy. Sold in six foot sections, you can simply order the posts and slat kits you need to complete the installation. Everything is included. The post kits include all the hardware. We also sell individual parts should you need them.



CORNER POST



END POST



LINE POST



MOUNTING PLATE



BLACK SLAT



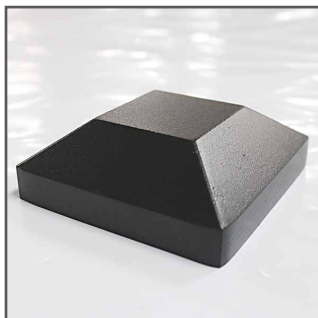
WOOD GRAIN SLAT



THIN SNAP PLATE



WIDE SNAP PLATE



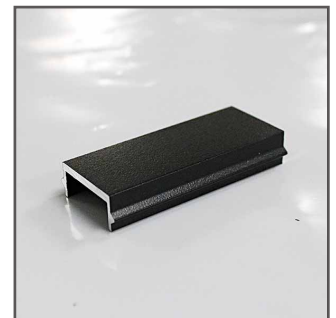
POST CAP



SCREWS



HALF INCH SPACER



TWO INCH SPACER



**ALABAMA** 205-647-0111, **CONNECTICUT** 860-812-0265, **FLORIDA** 321-728-2932, **GEORGIA** 770-868-1800,  
**KENTUCKY** 270-866-3331, **LOUISIANA** 225-387-1838, **MARYLAND** 301-699-0400, **MICHIGAN** 616-248-3433,  
**MISSOURI** 816-359-3836, **NORTH CAROLINA** 336-375-3442, **OHIO** (Columbus) 614-285-3584 or  
(Mt. Sterling) 740-869-2257, **PENNSYLVANIA** 570-567-7538, **SOUTH CAROLINA** 803-849-1625,  
**TENNESSEE** 615-860-0001, **TEXAS** (Austin) 512-631-0070 • (Dallas) 214-348-2400 • (Houston) 346-271-9017,  
**WEST VIRGINIA** 304-522-2210